

Thank you for your recent order!

Better Murals...Better Service

1-877-448-7295



Color Me! QuikStik™ - Single Panel Application

Discover how simple it is to install the Color Me! QuikStik™ removable and repositionable, self-adhesive mural. This product is intended specifically for interior wall applications and will not harm the wall surface when following the recommended application instructions. Please read the following instructions carefully prior to installing your new wall mural.

Acceptable Wall Surfaces

- Non-textured, smooth, painted drywall and sheetrock surfaces
- Non textured, smooth wallpaper
- Smooth wood surfaces – *Do not apply to varnished wood as removal may cause clear varnish to lift leaving minor damage.*
- Glass Windows

Unacceptable Wall Surfaces

- **Orange peel finishes**
- **Textured, porous, uneven or bumpy surfaces**
- “Commercial grade” wallpapers - decals will not adhere to wallpaper with “easy clean” or teflon coatings
- Exterior wall surfaces
- Unpainted drywall, or walls with inferior paint applications
- Walls exposed to extremely humid conditions may be problematic

Magic Mural products are designed for interior use only. Magic Murals is not liable for damages caused if the product is not applied and/or used as intended and outlined in this Application Instruction sheet.



If your mural requires you to install around an outlet or switch, shut off the power to the circuit and remove the faceplate. Install over the box. When the install is complete cut the excess material covering the outlet along the edges and reinstall the faceplate.

Installation Supplies Needed

- Felt Squeegee Tool (provided)
- Measuring Tape
- Masking Tape (preferably 2" wide)
- Ladder (if necessary)
- Scissors or Utility Knife
- Another Person to Assist You



Coloring Supply Options

- Acrylic Paints
- Crayons
- Colored Pencils
- Drop Cloth and Masking Tape

Preparing the Wall Surface

- **Do not install your Magic Mural over a freshly painted surface. We recommend waiting 7 to 10 days to allow paint/chemicals to completely cure.**
- Lay rolled sheet out flat and allow it to flatten for several hours.
- Measure the dimension of the mural to determine proper positioning on wall surface.
- Remove any objects (nails, hooks etc.) and clean wall surface with damp cloth to remove excess dust. (Do not use chemical cleaners) Allow adequate time for wall to dry prior to application.
- ⚠ If necessary, be sure and first remove wall receptacle and switch covers prior to installing the mural. Upon completion of the installation, trim away the small portion of mural covering the hole and replace cover.



Installation Procedures for Color Me! Murals:

Note: It may be necessary to have another person assist you.

Step 1 - Position the Mural - Tape the top two corners with masking tape in desired location. Measure as necessary to be sure the mural is properly aligned.

Step 2 - "Hinge" the Panel - Choose the one that applies:

2A- Mural panels with vertical or square orientation:

Drop down 10" to 12" below each of the two corners and place a 6" strip of masking tape horizontally to the wall and the mural – 3" on the wall and 3" on the mural. Once the hinge is in place, remove the two corner pieces of tape exposing the backside of the mural.

2B- Mural panels with horizontal orientation: At the center of the panel place a 6" strip of masking tape vertically at the top and bottom – 3" on the wall and 3" on the mural. Once the hinge is in place, remove the piece of tape from the left corner exposing the backside of the left half of the mural.

Step 3 - Peel the Decal - Peel the decal away from the backing paper exposing the sticky side of the decal. Be careful that it doesn't stick to itself. Use scissors or a utility knife to cut off the excess backing paper being careful to not harm the wall surface.

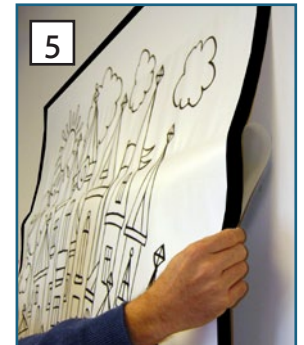
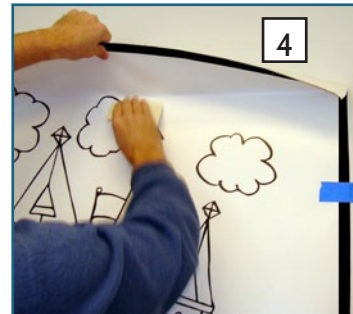
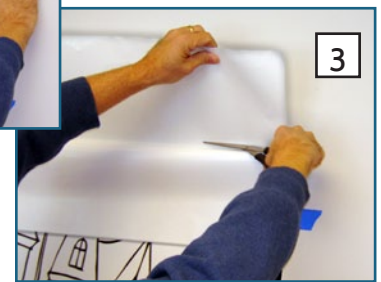
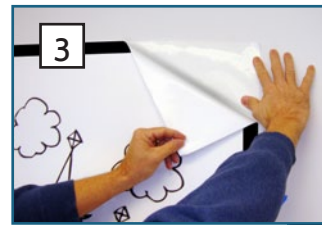
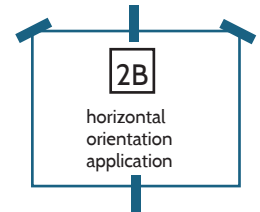
Step 4 - Apply the Mural - Starting at a center position near the hinge, use horizontal strokes with the squeegee to apply the exposed decal to the wall. Use gentle strokes and even pressure to secure the entire section in this same manner. Remove the remaining masking tape once the initial portion of the mural is secure and adhered correctly.

Step 5 - Complete the Installation - Reach underneath the panel and gradually pull another portion of backing paper away from the decal. Use the same method to apply the exposed decal using horizontal strokes with the squeegee tool. Continue to pull the paper away from the decal and apply with squeegee until complete. If an air bubble appears during the application, it may be necessary to gently pull up a portion of the vinyl to release the air pocket. Re-apply using even pressure with squeegee until complete. *Note: Use the edge of the squeegee tool to make sure all outside edges are well adhered to the wall surface.*

Step 6 - Prepare for Coloring - Use masking tape if you would like to tape an edge to your Color Me! image. Also you may want to cover the floor and surroundings with a drop cloth to protect other surfaces.

Step 7 - Color Me! - Add color to your Color Me! mural and remove painter's tape after the mural is dry.

Enjoy your Magic Mural!



Acceptable Color Applications:

- Acrylic Paint
- Crayons
- Colored Pencils